

**HEINE** QUALITY  
MADE IN GERMANY

➤ **HEINE mini 3000® Series**

Pocket Diagnostic Instruments – with outstanding illumination



# HEINE mini 3000 Series – Maximum Quality, Minimum Size

---

The HEINE mini 3000 series is the successful combination of the high quality features of full-size HEINE instruments and the convenience of pocket sized design.

## **HANDY AND ERGONOMIC**

Compact and ergonomic design guarantees a comfortable operation for the most reliable diagnosis in any examination situation.

## **A QUALITY PRODUCT WITH A MODERN DESIGN**

Special plastics provide maximum strength and durability in a lightweight and modern design. Maximum quality and durability with minimal dimensions.

## **QUALITY OPTICS AND ILLUMINATION**

The interaction between high quality optics and illumination is crucial in an instrument's performance and reliability. The optics produce distortion-free and brilliant images of the whole area under examination. The illumination system renders structures and colours accurately and naturally. The mini 3000 series provides the perfect balance of HEINE quality optics and illumination accuracy.

## Two illumination options. One compact series of instruments without equal: HEINE mini 3000

---

### **HEINE LED<sup>HQ</sup>: SETTING A NEW STANDARD HEINE XHL TECHNOLOGY: STILL A MILESTONE**

HEINE XHL Xenon-Halogen Technology has set the standard for the evaluation of new light technologies. It offers the perfect colour rendering that health care professionals have examined the eye with and depended

on for decades. But now there is another illumination option that meets this standard: our new LED<sup>HQ</sup> technology. Now you have a choice with no compromises: tried and true XHL, or LED in HEINE Quality.

### **HEINE LED<sup>HQ</sup>: LIGHT THAT SHOWS COLOURS AS THEY ARE**

LED light sources impress with a long lifetime and energy efficiency. There is no need to ever exchange the LED. The quality of LED illumination however can vary greatly compared to XHL illumination. With exclusive HEINE LED<sup>HQ</sup> technology you can enjoy all benefits of the familiar LED technology with no compromise in illumination quality.

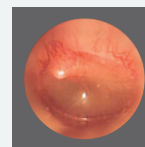
- ▶ **BRIGHT AND HOMOGENEOUS ILLUMINATION**
- ▶ **FAITHFUL COLOUR RENDERING INDEX**
- ▶ **CONSISTENT LIGHT OUTPUT AND PERFORMANCE THROUGHOUT THE WHOLE WORKING LIFE**

# HEINE mini 3000 F.O. Otoscope

Modern pocket otoscope, compact and powerful.

Swivelling viewing window with 3x magnification built into the instrument. Black inner instrument head.

Distal F.O. illumination. Reflex-free illumination of tympanum and ear canal.



Insufflation port for pneumatic mobility testing

XHL or LED<sup>HQ</sup> illumination for true colour images and a precise diagnosis



One-hand operation of the instrument for more flexibility during examinations

Attachment clip with integrated on/off switch. Switches off automatically when returned to the pocket. 20,000 ON/OFF switch cycles guaranteed.



Two power supply options: replaceable AA batteries or rechargeable options in combination with the mini NT table charger.



▶ To upgrade to a rechargeable instrument with mini NT table charger, please see page 7.

mini 3000 Otoscope with direct illumination, see page 6.

| mini 3000 F.O. Otoscope with LED or XHL illumination                               | 2.5V XHL     | 2.5V LED     |
|--|--------------|--------------|
| with mini 3000 battery handle (incl. batteries), 10 AllSpec disposable tips 4 mm Ø | D-001.70.110 | D-008.70.110 |

For additional ordering information, please contact your HEINE Distributor or visit us at [www.heine.com](http://www.heine.com)